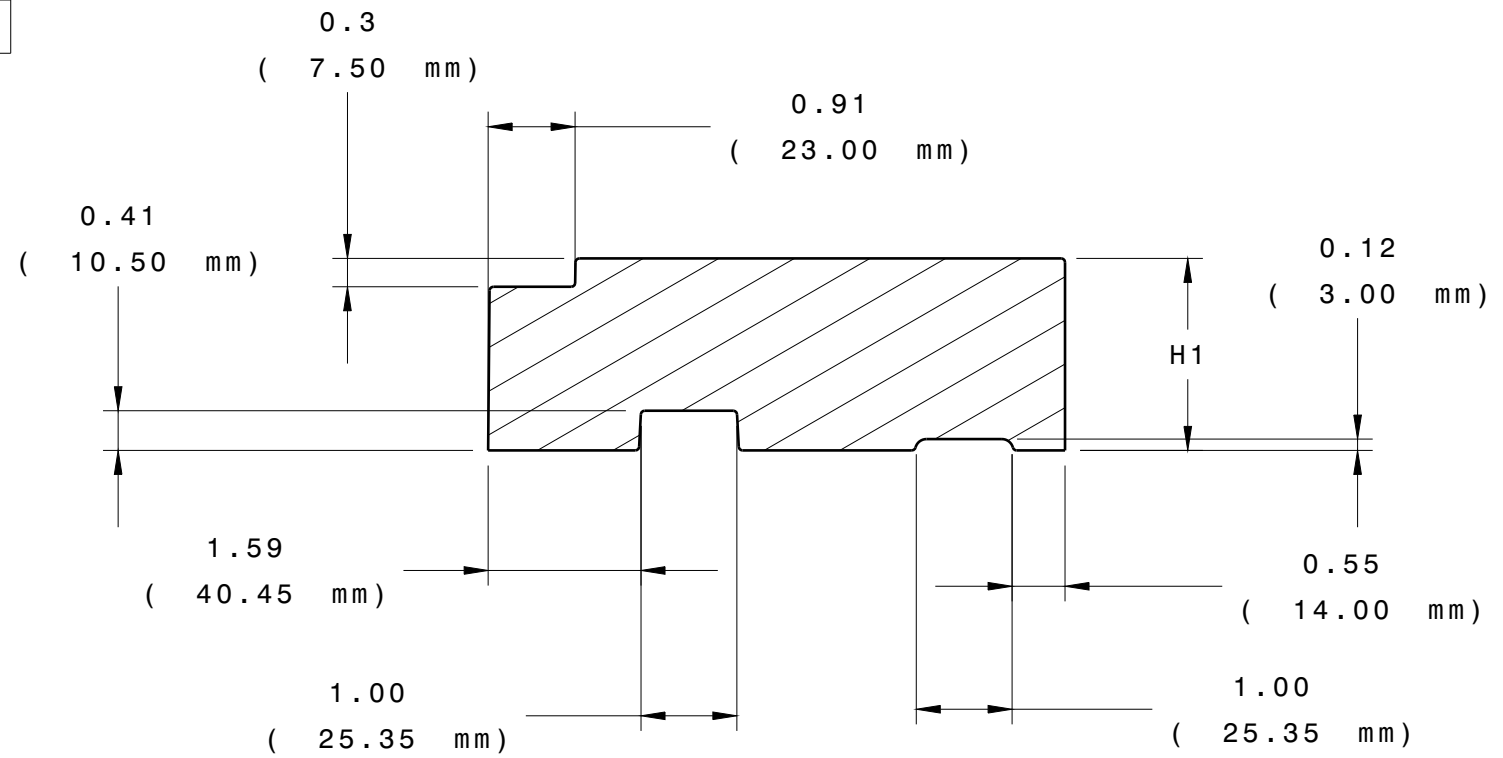
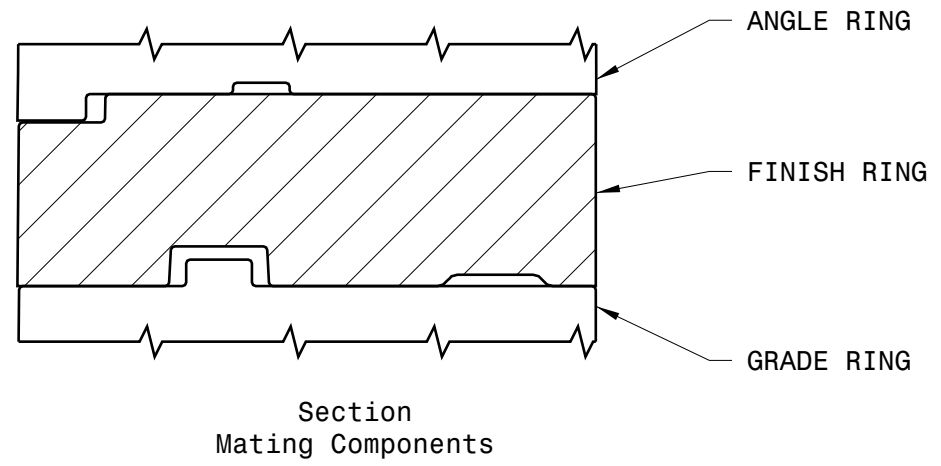
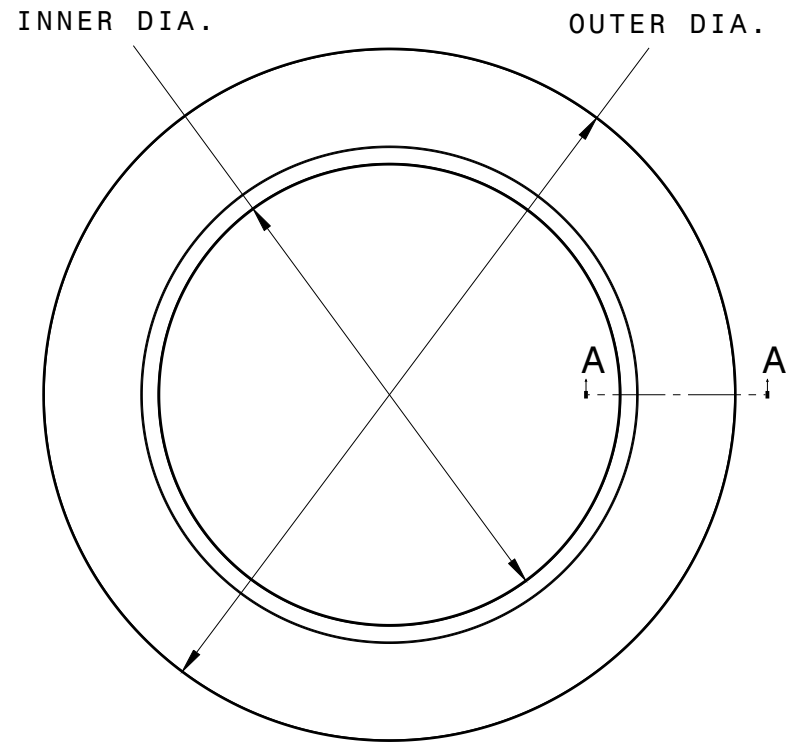


FINISH RING

PART NUMBER	OUTER DIA (IN.)	INNER DIA (IN.)	H1 (IN.)
36-24F-075	36	24	0.75
36-24F-100	36	24	1
36-24F-125	36	24	1.25
36-24F-150	36	24	1.5
36-24F-175	36	24	1.75
36-24F-200	36	24	2
36-24F-225	36	24	2.25
36-24F-250	36	24	2.5
36-24F-400	36	24	4
36-24F-600	36	24	6



Section cut A-A
Scale: 1:2

REV LEVEL	CHANGE DESCRIPTION	ECN #	DATE	INITIALS
02	ADDED 4" AND 6" RINGS.	N/A	09FEB 2017	R.D.
01	REMOVED OUTBOARD KEY SLOT. ADDED GLUE TRENCH.	N/A	05APR 2010	R.D.

PRO-RING MANHOLE ADJUSTMENT SYSTEM

PART NUMBER: **36 SERIES FINISH RINGS**
CUSTOMER REVISION LEVEL:
ENGINEER: _____ PHONE NUMBER: _____

GENERAL NOTES:

- MEETS HS20/HS25 LOADING PER M306 PROOF LOAD
- ARPRO EXPANDED POLYPROPYLENE BLACK 120 G/L ASTM-D3575
- OVERALL LENGTH & HEIGHT TOLERANCE = +/-0.25 %
- DENSITY/WEIGHT TOLERANCE = +/-10%

SURFACE PROFILE: 5.0mm A B M C M

NO BURRS AT PARTING LINE PORTION

ALL HOLES OR SLOT SIZE TOLERANCE: ± 0.5 MM

MATERIAL SPECIFICATION:
3D CAD IS MASTER

ENGLISH/INCHES UNLESS OTHERWISE SPECIFIED

CAD SYSTEM: CATIA V5

MATERIAL: EPP

Scale 1:8

DRWN BY:	ENGINEERING:	MOLDING:	QUALITY: