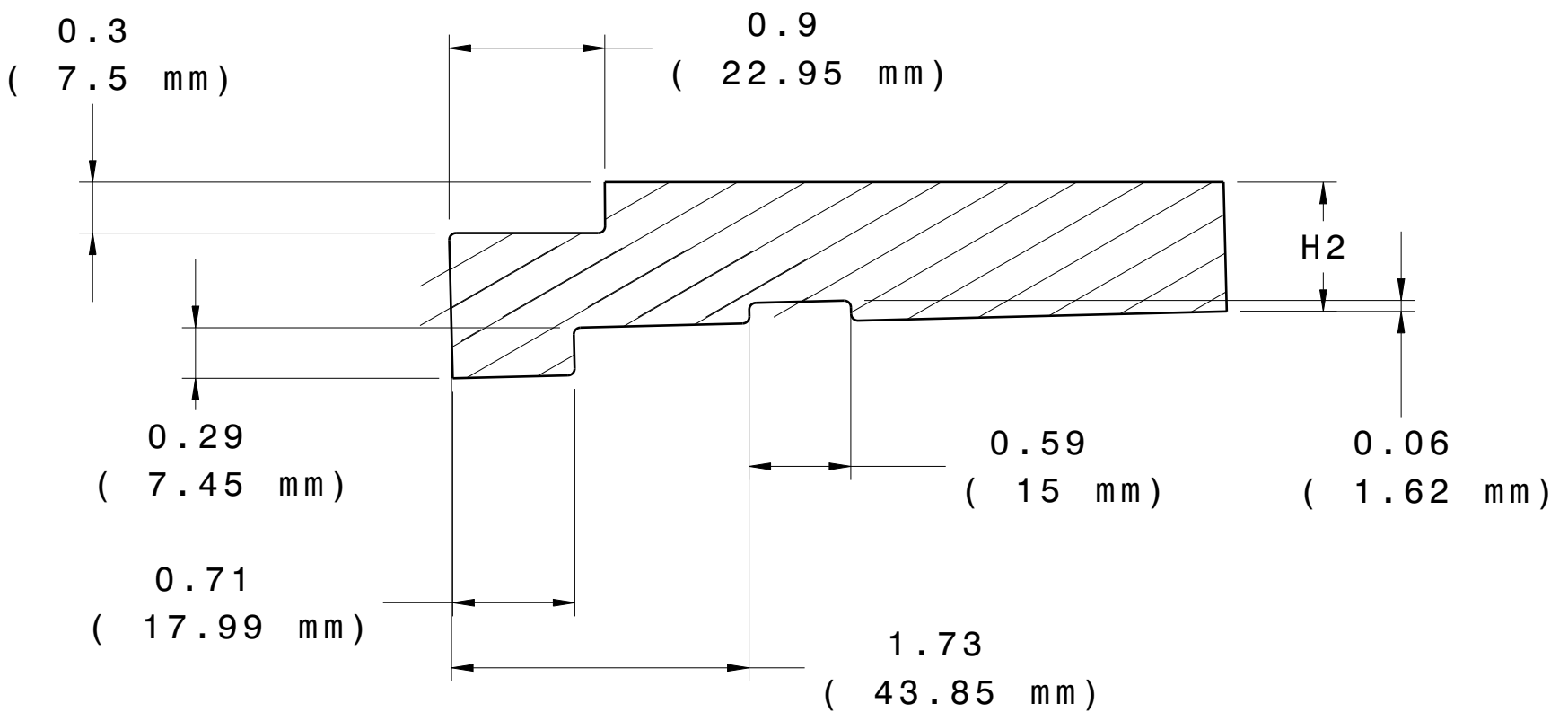
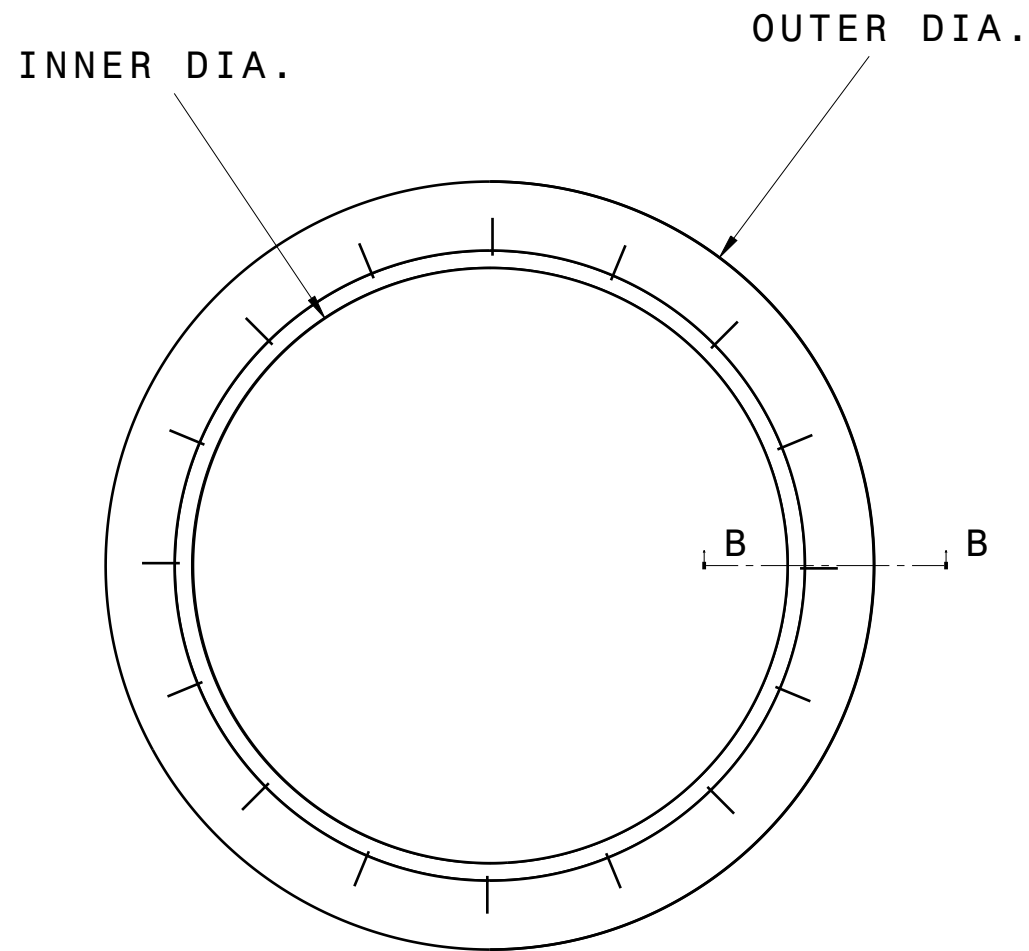
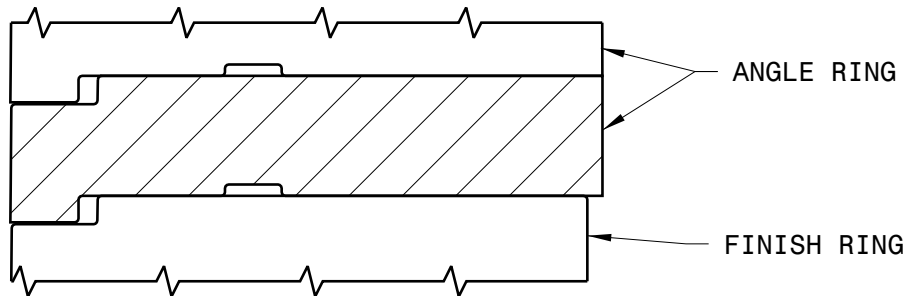
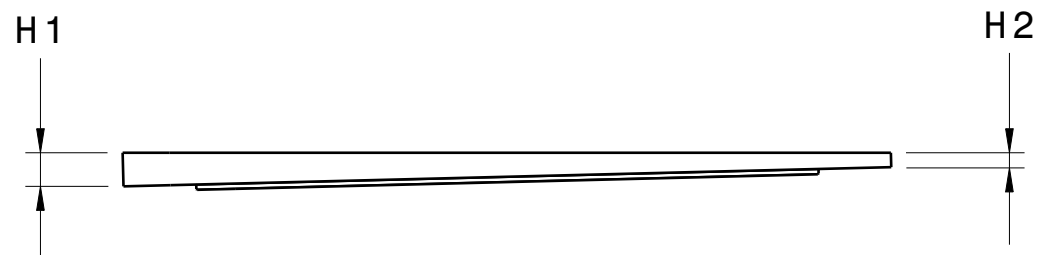


ANGLE RINGS					
PART NUMBER	OUTER DIA (IN.)	INNER DIA. (IN.)	H1 (IN.)	H2 (IN.)	WEIGHT (lbs.)
40-31A-100	40	31	1.75	0.75	2.5



Section cut B-B



GENERAL NOTES:

- MEETS HS20/HS25 LOADING PER M306 PROOF LOAD
- ARPRO EXPANDED POLYPROPYLENE BLACK 120 G/L ASTM-D3575
- OVERALL LENGTH & HEIGHT TOLERANCE = +/-0.25 %
- DENSITY/WEIGHT TOLERANCE = +/-10%

SURFACE PROFILE: 5.0mm A B M C M

NO BURRS AT PARTING LINE PORTION

ALL HOLES OR SLOT SIZE TOLERANCE: ± 0.5 MM

MATERIAL SPECIFICATION: 3D CAD IS MASTER

ENGLISH/INCHES UNLESS OTHERWISE SPECIFIED

CAD SYSTEM: CATIA V5

MATERIAL: EPP

FILENAME:

Scale 1:10

01	INITIAL RELEASE	N/A	20MAY 2020	E.N.
REV LEVEL	CHANGE DESCRIPTION	ECN #	DATE	INITIALS
		PART NUMBER: 40 SERIES ANGLE RINGS CUSTOMER REVISION LEVEL: ENGINEER: PHONE NUMBER		
DRAWN BY:	ENGINEERING:	MOLDING:	QUALITY:	