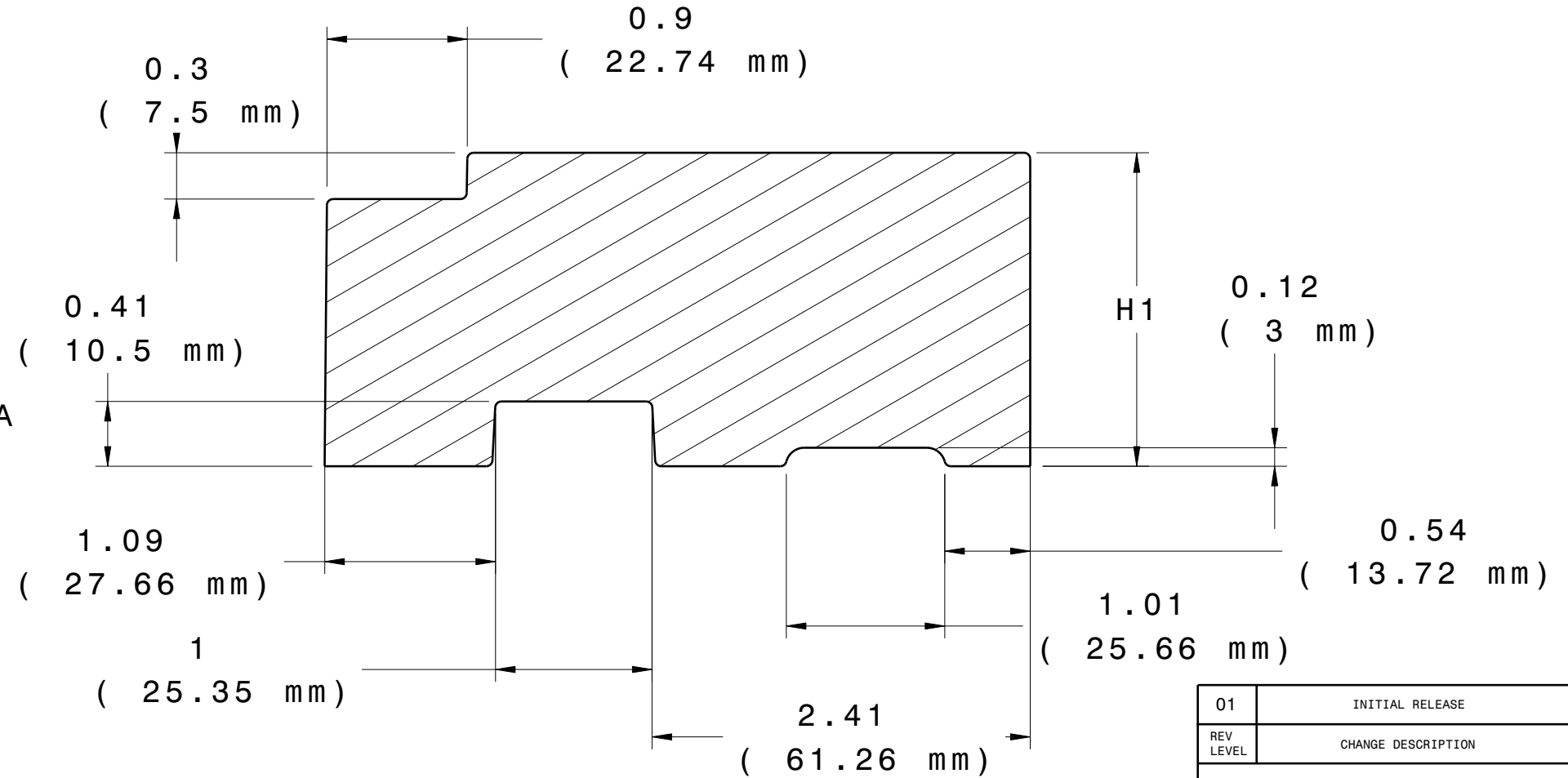
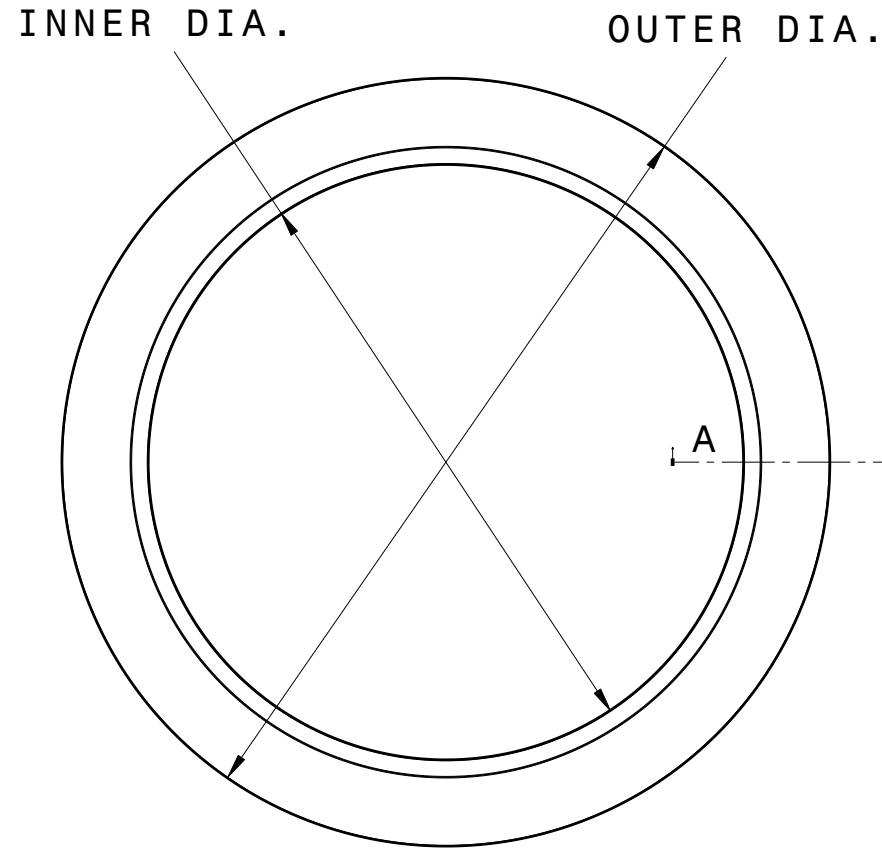
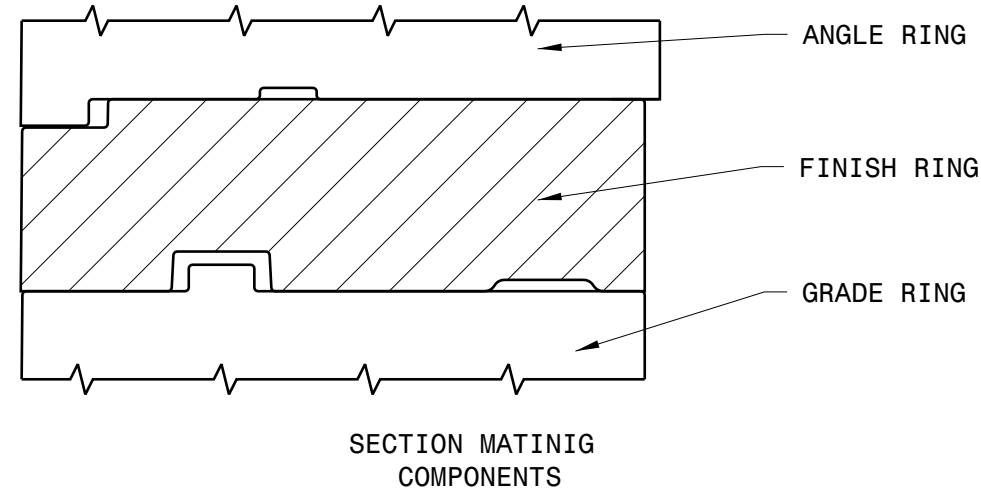


FINISH RING

PART NUMBER	OUTER DIA (IN.)	INNER DIA (IN.)	H1 (IN.)
40-31F-075	40	31	0.75
40-31F-100	40	31	1
40-31F-125	40	31	1.25
40-31F-150	40	31	1.50
40-31F-175	40	31	1.75
40-31F-200	40	31	2
40-31F-225	40	31	2.25
40-31F-250	40	31	2.50
40-31F-400	40	31	4
40-31F-600	40	31	6



GENERAL NOTES:

- MEETS HS20/HS25 LOADING PER M306 PROOF LOAD
- ARPRO EXPANDED POLYPROPYLENE BLACK 120 G/L ASTM-D3575
- OVERALL LENGTH & HEIGHT TOLERANCE = +/-0.25 %
- DENSITY/WEIGHT TOLERANCE = +/-10%

SURFACE PROFILE: 5.0mm A B M C M

NO BURRS AT PARTING LINE PORTION

ALL HOLES OR SLOT SIZE TOLERANCE: ± 0.5 MM

MATERIAL SPECIFICATION: 3D CAD IS MASTER

ENGLISH/INCHES UNLESS OTHERWISE SPECIFIED

CAD SYSTEM: CATIA V5

MATERIAL: EPP

Scale 1:10

01	INITIAL RELEASE	N/A	19MAY 2020	R.D.
REV LEVEL	CHANGE DESCRIPTION	ECN #	DATE	INITIALS
		PART NUMBER: 40 SERIES FINISH RINGS CUSTOMER REVISION LEVEL:		
DRAWN BY:	ENGINEERING:	MOLDING:	QUALITY:	