

MANHOLE LID PLUG

STOP INFLOW EASILY AND ECONOMICALLY

Manhole Lid Plugs stop inflow through manhole lids by sealing unneeded holes with high quality lid plugs. Lid Plugs can be removed with pliers for lid removal or to check interior air quality.

Lid Sealing Advantage

- Removable plugs fit various sizes of round holes.
- Hi-quality rubber for longevity and to deter the elements.



Available in six sizes to fit $\frac{3}{4}$ ", $\frac{7}{8}$ ", 1", $1\frac{1}{8}$ ", $1\frac{1}{4}$ " and $1\frac{1}{2}$ " diameter holes in lids 1" or less in thickness.

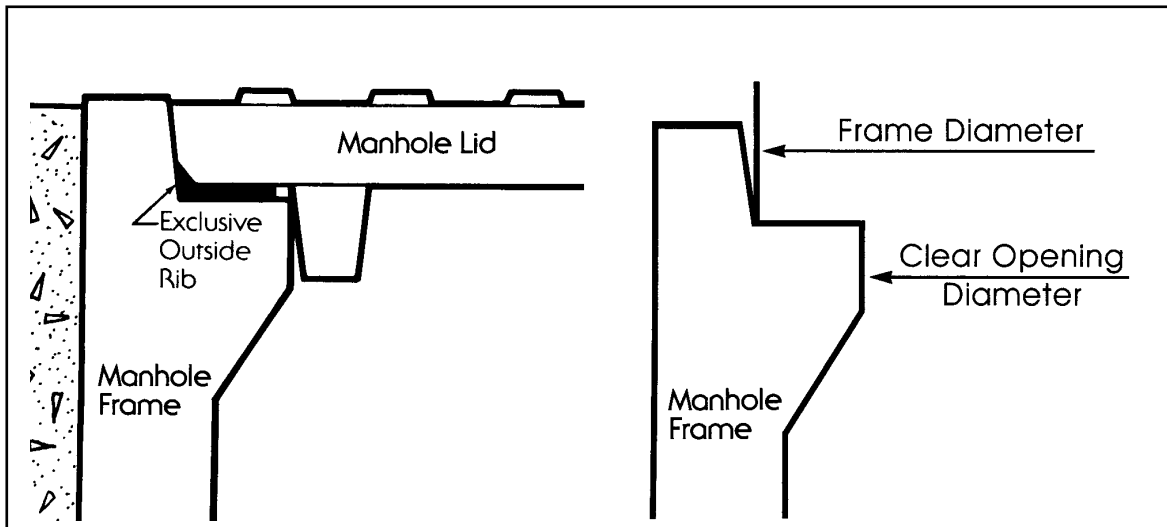
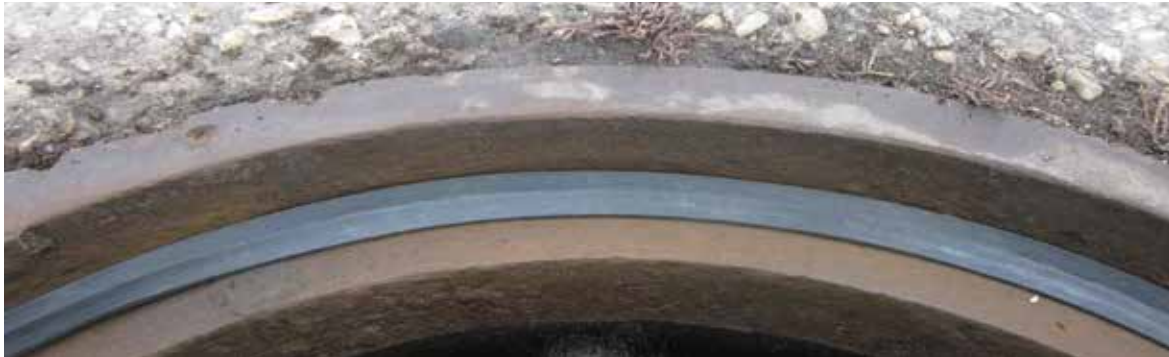


MANHOLE LID GASKET



STOP INFLOW EASILY AND ECONOMICALLY

Stop inflow around the manhole lid with our low maintenance lid gasket option for sealing existing manhole lids. This seal, molded or extruded from high quality rubber, is available with our exclusive triangular shaped outside rib. It's use not only insures a positive lid-frame seal, but eliminates lid rattle as well, and when properly installed, is not disturbed by lid removal and replacement.

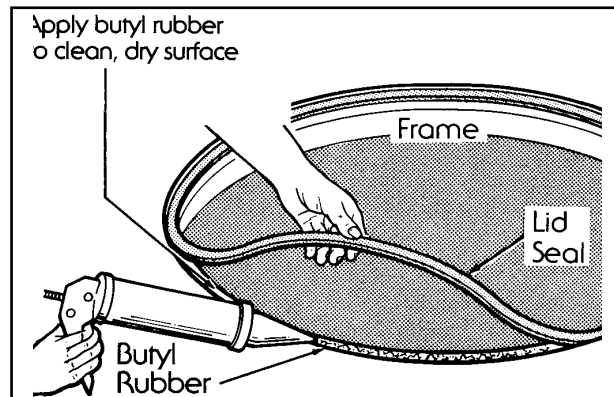


ORDERING PROCEDURE

Specify the inside diameter of the frame at the base of the lid recess and the inside diameter of the clear opening, as shown (above right).

INSTALLATION

Clean bearing surface with power wire brush. Surface must be dry and dust free before applying a large enough bead of butyl rubber to bond the gasket to the frame, but not so much as to ouze out from the weight of the lid and traffic loading causing the gasket to bond to the lid as well.



— SEE INSTALLATION INSTRUCTIONS FOR DETAILED PROCEDURE —