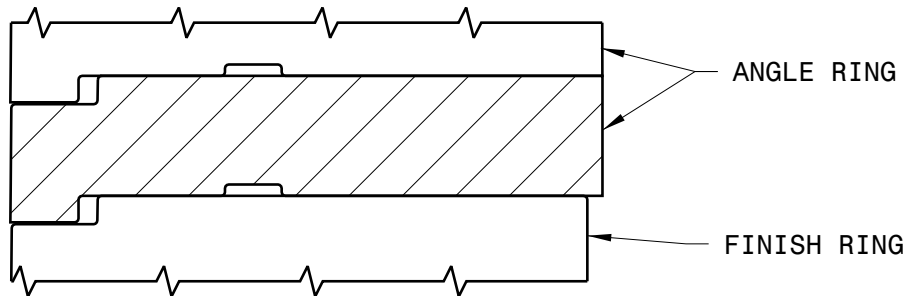
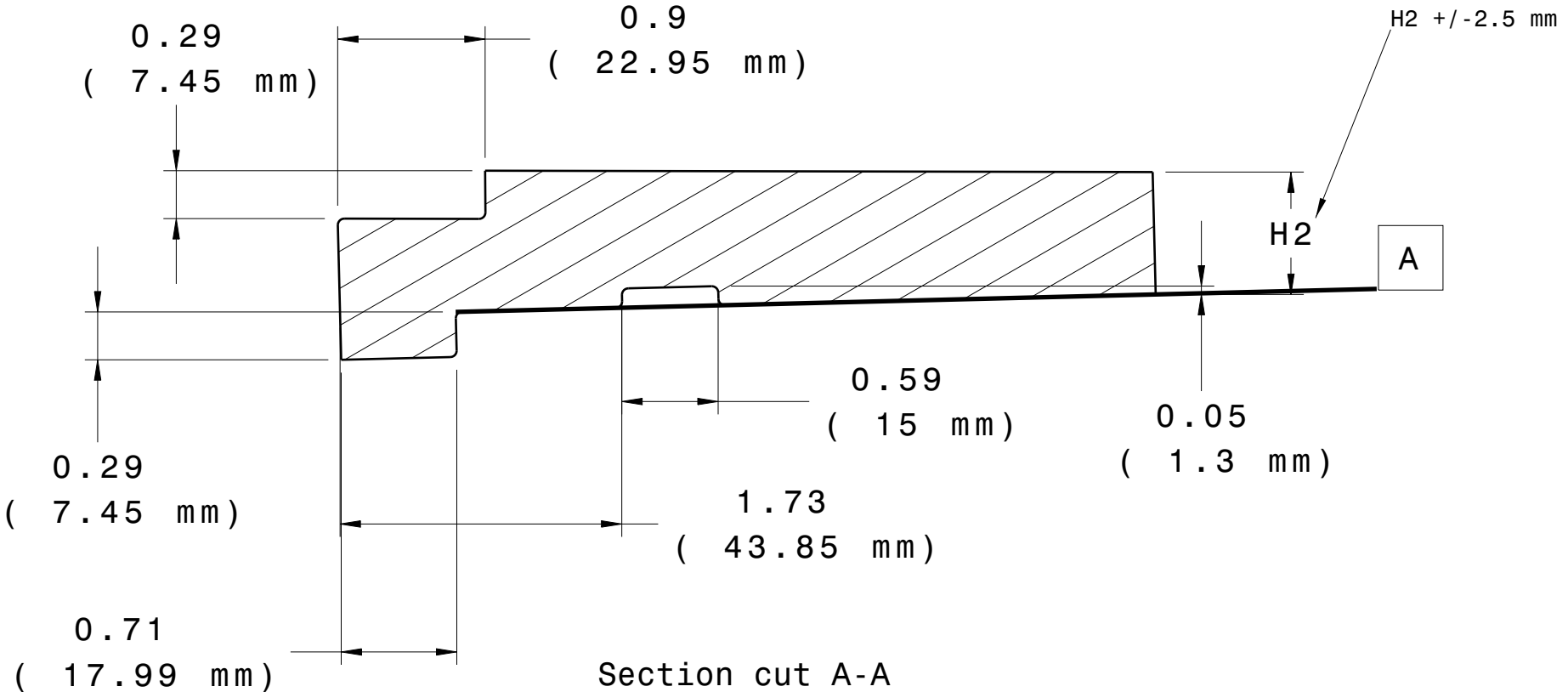
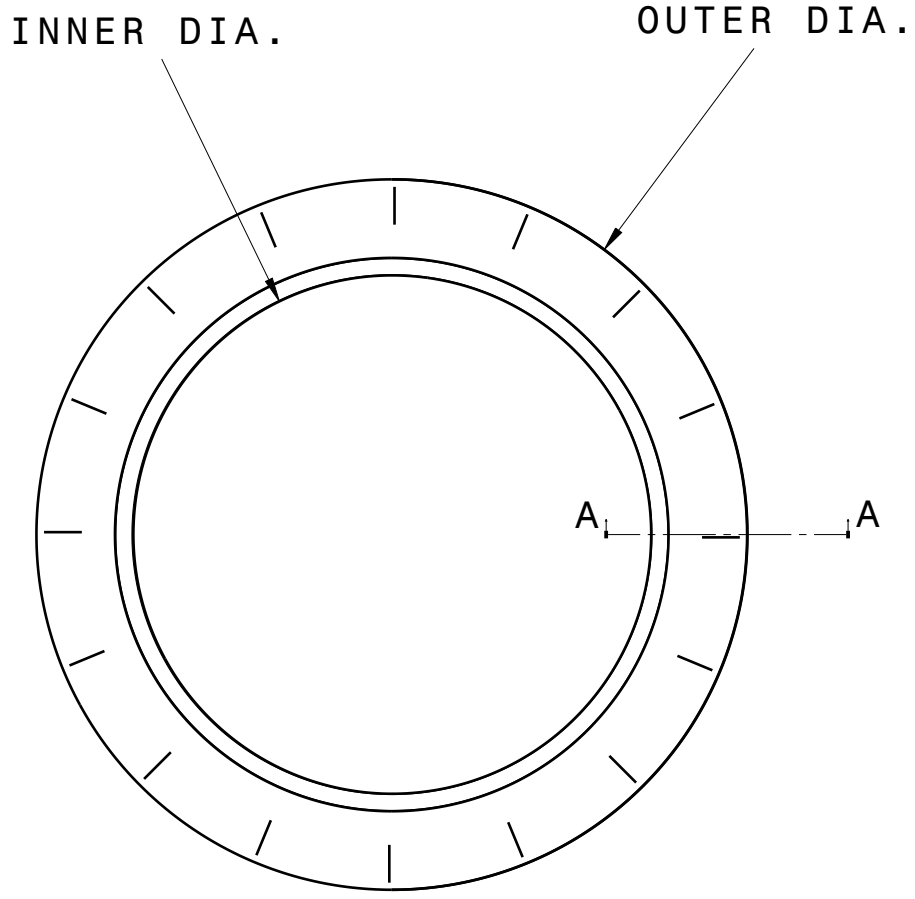


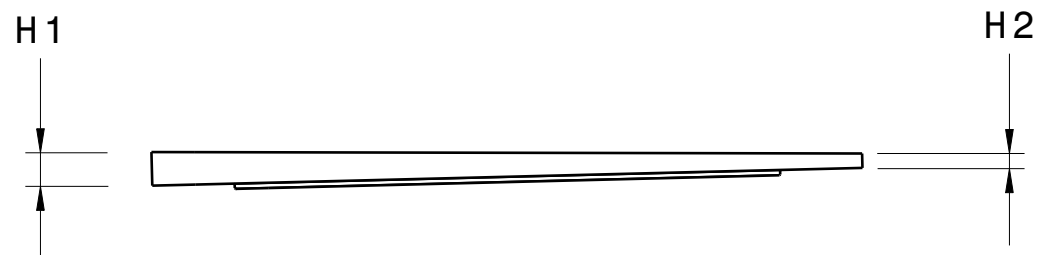
ANGLE RINGS					
PART NUMBER	OUTER DIA (IN.)	INNER DIA. (IN.)	H1 (IN.)	H2 (IN.)	WEIGHT (lbs.)
37-27A-100	37	27	1.75	0.75	2.67



Section Mating Components



Section cut A-A



GENERAL NOTES:

- MEETS HS20/HS25 LOADING PER M306 PROOF LOAD
- ARPRO EXPANDED POLYPROPYLENE BLACK 120 G/L ASTM-D3575
- OD AND ID +/-0.25 % PER SIDE
- FLASH: 3MM SOFT FLASH OK. CANNOT IMPACT STACK HEIGHT
- DENSITY/WEIGHT TOLERANCE = +/-10%

01	INITIAL RELEASE	N/A	04-JAN 2022	E.N.
REV LEVEL	CHANGE DESCRIPTION	ECN #	DATE	INITIALS

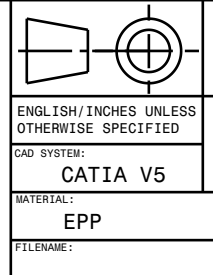
PRO-RING MANHOLE ADJUSTMENT SYSTEM	PART NUMBER: 37 SERIES ANGLE RINGS	CUSTOMER REVISION LEVEL:
ENGINEER:	PHONE NUMBER:	

SURFACE PROFILE: $\sqrt{5.0\text{mm}} \text{ A}$

NO BURRS AT PARTING LINE PORTION

ALL HOLES OR SLOT SIZE TOLERANCE: $\pm 0.5 \text{ MM}$

MATERIAL SPECIFICATION: 3D CAD IS MASTER



ANY HARD COPY OF THIS DRAWING IS TO BE CONSIDERED AN UNCONTROLLED COPY UNLESS OTHERWISE SPECIFIED. ELECTRONIC COPY IS MASTER

DRAWN BY:	ENGINEERING:	MOLDING:	QUALITY:
Scale	1:10		