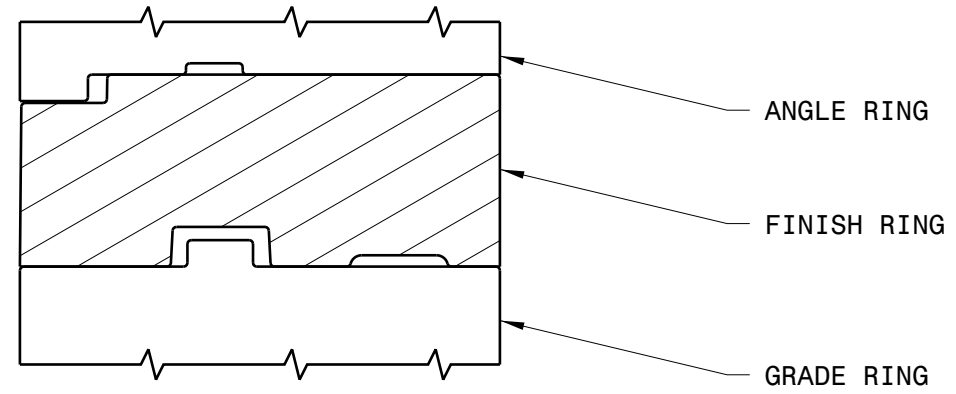


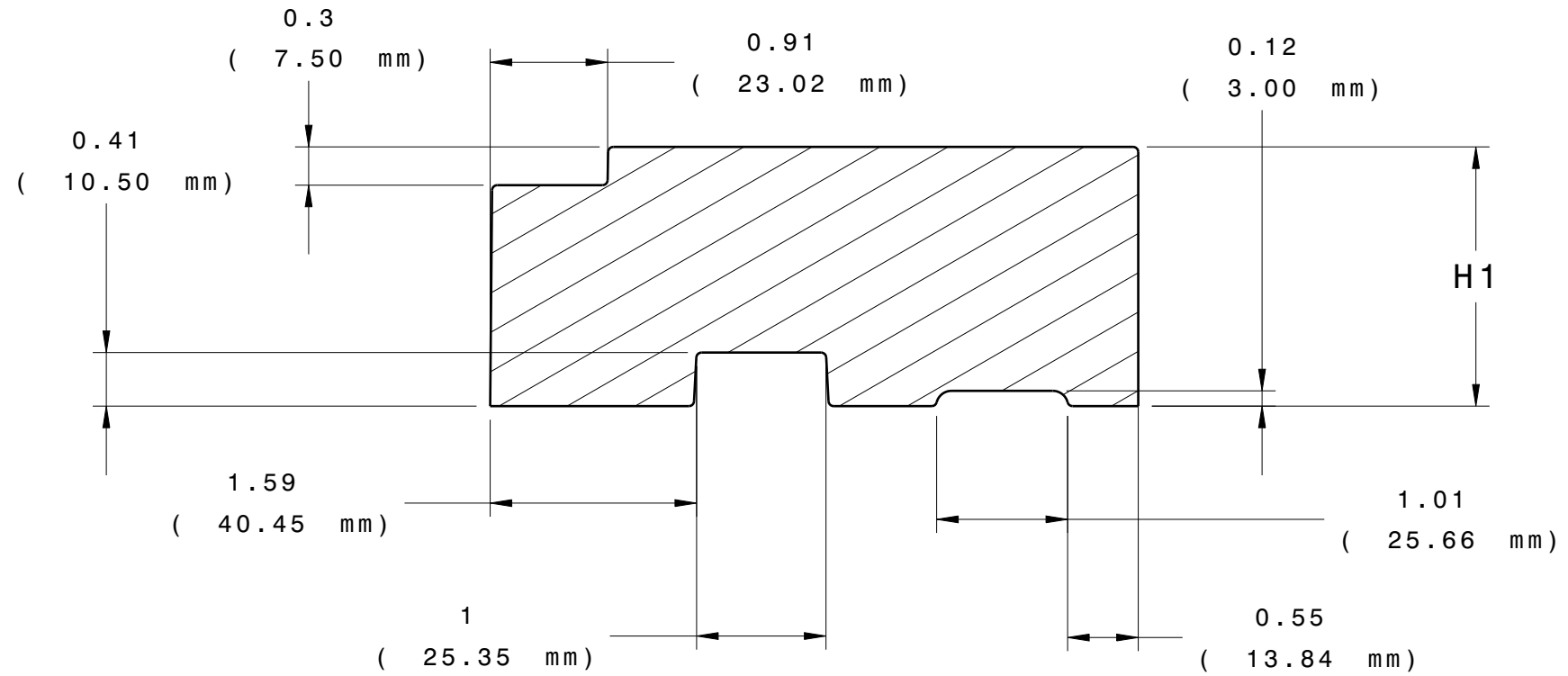
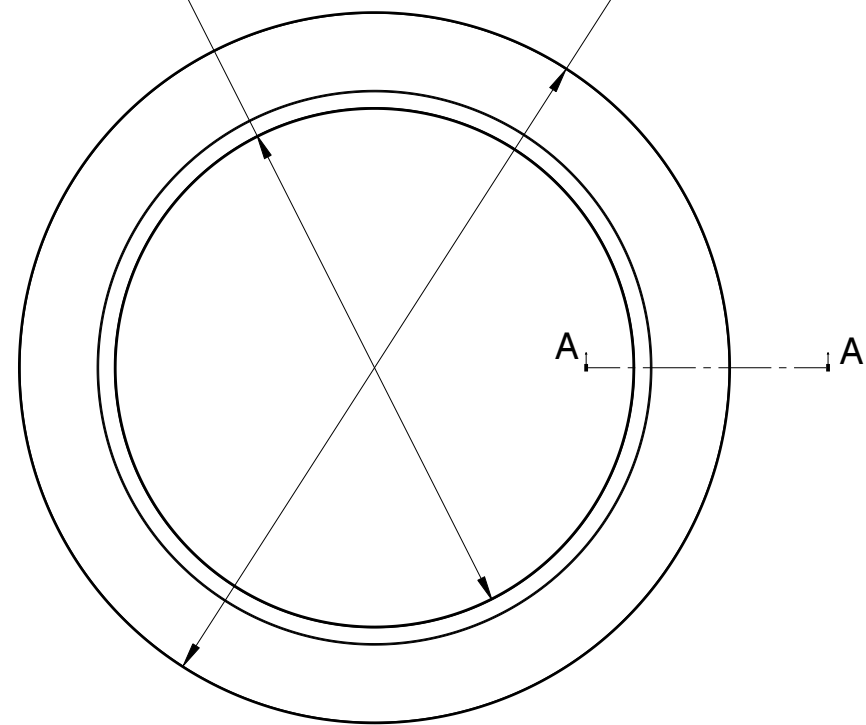
FINISH RING

PART NUMBER	OUTER DIA (IN.)	INNER DIA (IN.)	H1 (IN.)	WEIGHT (lbs.)
37-27F-075	37	27	0.75	1.30
37-27F-100	37	27	1.00	1.85
37-27F-125	37	27	1.25	2.39
37-27F-150	37	27	1.50	2.93
37-27F-175	37	27	1.75	3.48
37-27F-200	37	27	2.00	4.02
37-27F-225	37	27	2.25	4.57
37-27F-250	37	27	2.50	5.11
37-27F-400	37	27	4.00	8.37
37-27F-600	37	27	6.00	12.7



SECTION MATINIG COMPONENTS

INNER DIA. OUTER DIA.



Section cut A-A

GENERAL NOTES:

- MEETS HS20/HS25 LOADING PER M306 PROOF LOAD
- ARPRO EXPANDED POLYPROPYLENE BLACK 120 G/L ASTM-D3575
- OVERALL LENGTH & HEIGHT TOLERANCE = +/-0.25 %
- DENSITY/WEIGHT TOLERANCE = +/-10%

SURFACE PROFILE: 5.0mm A B M C M

NO BURRS AT PARTING LINE PORTION

ALL HOLES OR SLOT SIZE TOLERANCE: ± 0.5 MM

MATERIAL SPECIFICATION: 3D CAD IS MASTER

ENGLISH/INCHES UNLESS OTHERWISE SPECIFIED

CAD SYSTEM: CATIA V5

MATERIAL: EPP

Scale 1:10

01	INITIAL RELEASE	N/A	04JAN 2022	E.N.
REV LEVEL	CHANGE DESCRIPTION	ECN #	DATE	INITIALS
		PART NUMBER: 37 SERIES FINISH RINGS CUSTOMER REVISION LEVEL: ENGINEER: PHONE NUMBER		
DRAWN BY:	ENGINEERING:	MOLDING:	QUALITY:	